



jordan fishwick

BURNAGE
Moorton Avenue



Moorton Avenue, Burnage, M19 2NQ

Guide Price £70,000

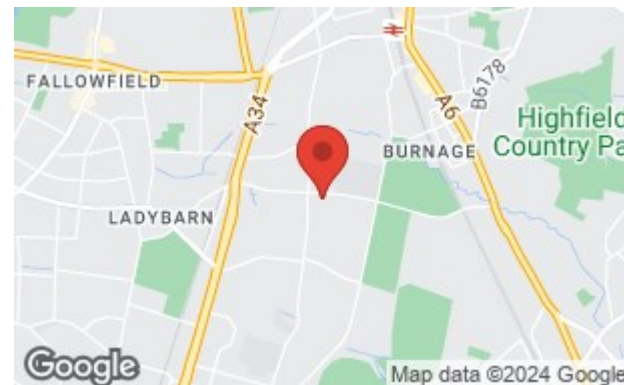


The Property

****OVER 55'S ONLY** 50% SHARED OWNERSHIP**** - A ground floor TWO BEDROOM apartment offered for sale on a 50% SHARED OWNERSHIP basis to the over 55's, enjoying a QUIET LOCATION, private entrance, allocated off road parking and shared garden. This two bedroom apartment is situated just a short distance to bus links and Mauldeth Road train station, giving easy access into Manchester City Centre. Being part of the shared ownership scheme, it offers eligible buyers over the age of 55 (subject to application), to purchase a 50% share of the property. The apartment is accessed by its own private entrance and offers a spacious entrance hall, fitted kitchen, two bedrooms and a generous bathroom. Allocated parking is to the front of the property whilst a shared lawned garden is accessed via a gate to the rear. No onward chain.

Directions

M19 2NQ



- Retirement apartment (Over 55's)
- 50% shared ownership
- Two bedrooms
- Living room
- Fitted kitchen
- Generous bathroom
- Allocated parking
- Shared rear garden
- No onward chain
- Convenient location

Postcode - M19 2NQ

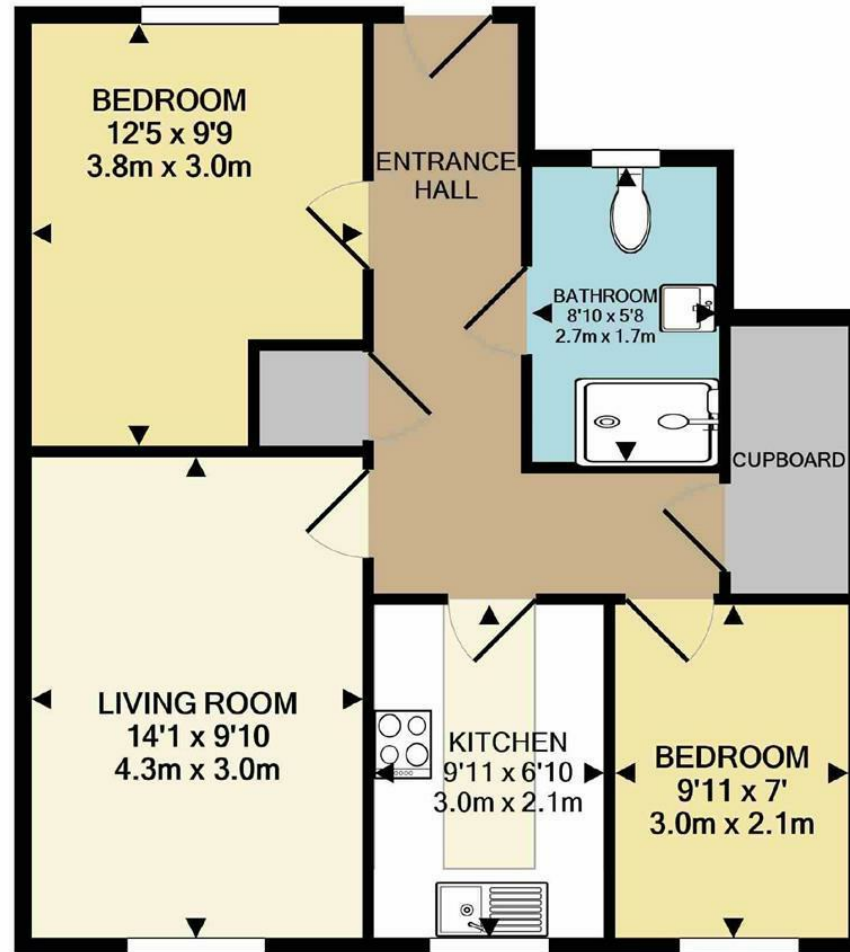
EPC Rating - C

Floor Area - 572.00 sq ft

Local Authority - Manchester City Council

Council Tax - B





TOTAL APPROX. FLOOR AREA 572 SQ.FT. (53.1 SQ.M.)
 Measurements are approximate. Not to scale. Illustrative purposes only
 Made with Metropix ©2021



These particulars are believed to be accurate but they are not guaranteed and do not form a contract. Neither Jordan Fishwick nor the vendor or lessor accept any responsibility in respect of these particulars, which are not intended to be statements or representations of fact and any intending purchaser or lessee must satisfy himself by inspection or otherwise as to the correctness of each of the statements contained in these particulars. Any floorplans on this brochure are for illustrative purposes only and are not necessarily to scale.

Offices also at: Wilmslow, Macclesfield, Hale, Sale, Chorlton, Glossop, Manchester & Salford

757-759 Wilmslow Road, Didsbury Village, Manchester

0161 445 4480

didsbury@jordanfishwick.co.uk
www.jordanfishwick.co.uk